

scanning accuracy
up to **0.0183 mm**

 EVIXSCAN 3D



 EVIXSCAN 3D

Heavy Duty Optima

High-precision 3D scanning of small and medium size objects

Heavy body construction enables scanning in variable environment. High point density is helpful for scanning of small, medium and detailed objects.

Useful for: contactless quality inspection, reverse engineering and rapid prototyping.

- Cameras: 2 x 5 megapixel
- Accuracy: **0.0183 mm**
- Light-source: **Blue LED**
- ToolKit Box support
- IP 31
- Set includes:
eviXscan Suite, tripod, calibration plate,
transport hardcase

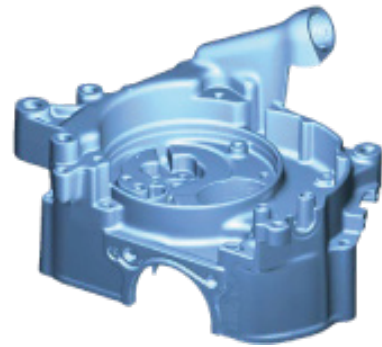
 designed by
evatronix

Evatronix SA

Wiktora Przybyły 2, 43-300 Bielsko-Biała, Poland

www.evatronix.com · www.evixscan3d.com · scanners3d@evatronix.com · +48 33 499 59 11

We're ready to solve most common and time consuming engineering problems, like a measurement of objects with areas hard to access: freeforms, pockets, threadedholes, numerous ribs, angles... for quality control



We made this gearbox housing STL model in just 45 minutes

Heavy Duty Optima

Light-source
Cameras
Accuracy
Scanning time
Measuring ranges
Points density
Software
Export formats
Computer requirements
Computer connection

Blue LED
2 x 5 Mpix
*up to 0.0183 mm
5 seconds
250 x 170 x 120 mm
95 pt/mm²
eviXscan Suite
stl, ply, obj, asc, bin
Windows 7 (64-bit), 16 GB RAM, CPU i5
1 x USB 3.0 and HDMI

* Accuracy determined with the use of the standard DE VDI / VDE 2634, Part 2, 4.1 Ps



We are an authorized 3D Systems partner
eviXscan software is integrated
with Geomagic® DesignX™ and Geomagic® ControlX™