

scanning accuracy  
up to 0.013 mm

 EVIXSCAN 3D



 EVIXSCAN 3D

## Heavy Duty Quadro

### Versatile 3D scanning in harsh environment

Aluminium body and carbon fiber beam on Heavy Duty Quadro guarantees precise measurements in harsh environment. Two ranges enable to scan objects of different dimensions: from a few centimeters to several meters.

**Useful for:** contactless quality inspection, reverse engineering and rapid prototyping.

- Cameras: 4 x 5 megapixel
- Accuracy: **0.013 mm**
- Light-source: **R/G/B LED**
- 2 measuring ranges
- ToolKit Box support
- IP 62
- Laser trackers
- Set includes:  
*eviXscan Suite*, tripod, calibration plate,  
transport hardcase

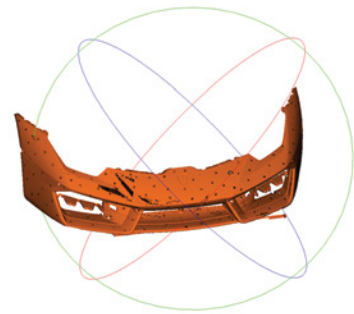
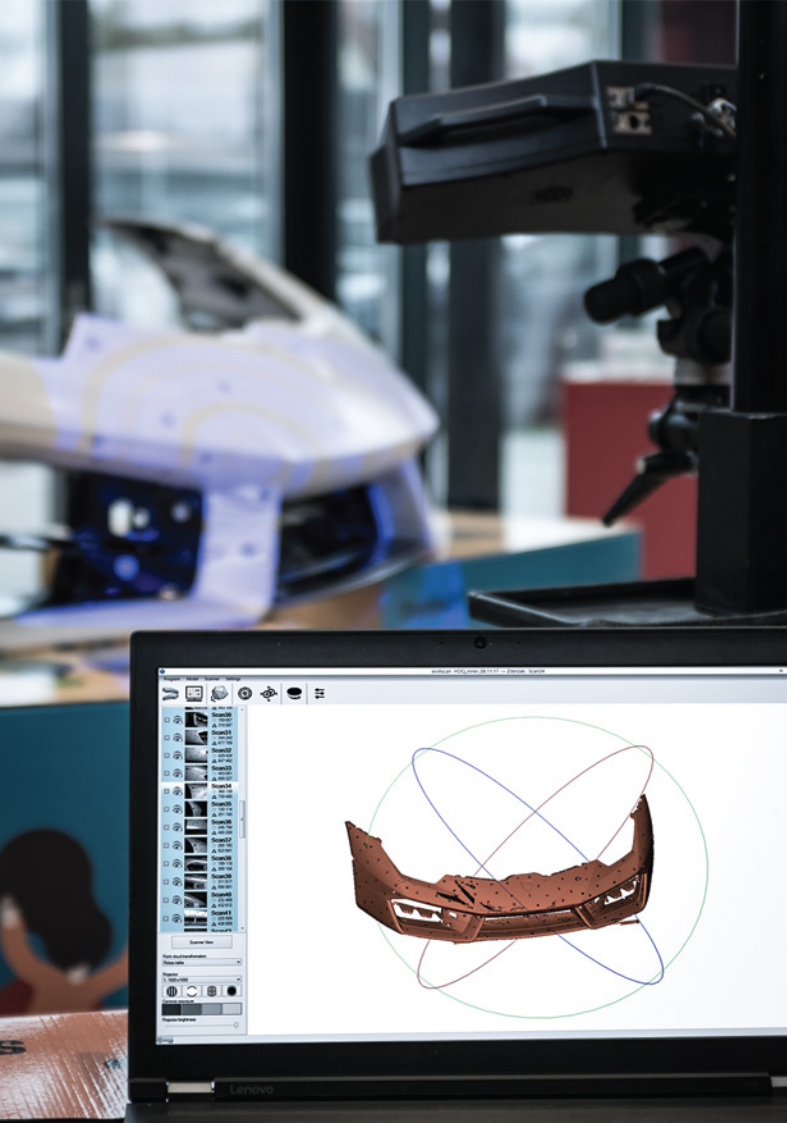
 designed by  
evatronix

**Evatronix SA**

Wiktora Przybyły 2, 43-300 Bielsko-Biała, Poland

www.evatronix.com · www.evixscan3d.com · scanners3d@evatronix.com · +48 33 499 59 11

Shapers Advanced Design Studio uses  
**Heavy Duty Quadro** for acceleration supercars  
redesign process



## Heavy Duty Quadro

Light-source  
Cameras  
Accuracy  
Scanning time  
Measuring ranges  
Points density  
Software  
Export formats  
Computer requirements  
Computer connection

R/G/B LED  
4 x 5 Mpix  
\*up to 0.013 mm  
5 seconds  
370 x 265 x 150 mm / 150 x 115 x 90 mm  
41 pt/mm<sup>2</sup> / 232 pt/mm<sup>2</sup>  
eviXscan Suite  
stl, ply, obj, asc, bin  
Windows 7 (64-bit), 16 GB RAM, CPU i5  
1 x USB 3.0 and HDMI

\* Accuracy determined with the use of the standard DE VDI / VDE 2634, Part 2, 4.1 Ps



We are an authorized 3D Systems partner  
eviXscan software is integrated  
with Geomagic® DesignX™ and Geomagic® ControlX™